

# Analyze a Written Document



## Meet the document.

Are there any special markings on the document? Circle all that apply.



STAMP



POSTMARK



HANDWRITTEN  
NOTE



OFFICIAL  
SEAL



SPECIAL  
LETTERHEAD



OTHER

Is it handwritten or typed?



Write down any words that you don't know. Then look up the definitions.



## Try to make sense of it.

What is the main idea of the document?

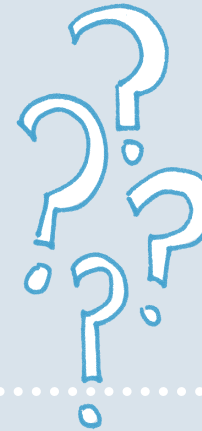
List two quotes (words from the document) that help support the main idea.

## Observe its parts.

Who wrote this document?

What is the date of the document?

Who read or received this document?



## Use it as historical evidence.

Where do you think you could find out more information about the persons who wrote or received this document?

Where do you think you could find out more information about this event?



NATIONAL  
ARCHIVES

